

## Stainless Steel- Tubular handles

### Mounting from the operator's side

#### SPECIFICATION

##### Types

- Type **K**: with plastic cover cap
- Type **E**: with Stainless Steel cover cap

Tube Ø 30 x 1.5  
Stainless Steel AISI 304  
matt shiny finish, ground

Handle shanks  
Stainless Steel AISI 304  
matt shiny finish, ground

Mounting stud  
with threaded pin DIN 913-M8  
Stainless Steel AISI 304

Grub screw DIN 914-M5  
Stainless Steel AISI 304

##### Cover caps

- Type K: Plastic (Polyamide PA), black matt
- Type E: Stainless Steel AISI 304

#### INFORMATION

For a mounting of Stainless Steel-Tubular handles GN 666.7 (mounting from the back) the stud is first screwed in from the machine side with the threaded pin DIN 913-M8x25 (included) and then the handle is pushed on and secured with the grub screw DIN 914-M5.

Type E of Stainless Steel-Tubular handles GN 666.7 is completely made of A2-Stainless Steel.

#### ON REQUEST

- Special lengths

#### TECHNICAL INFORMATION

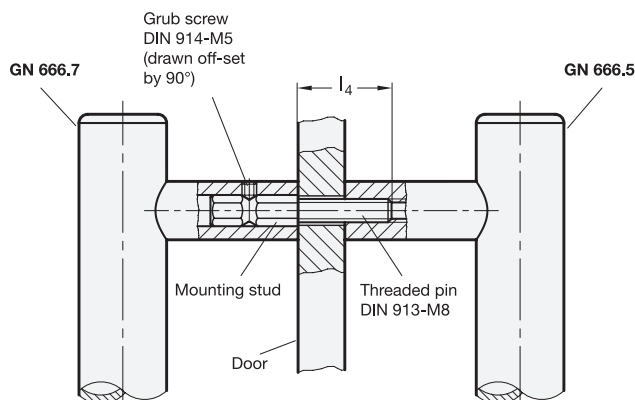
- Stainless Steel characteristics (see page A26)
- Load rating information (see page A35)

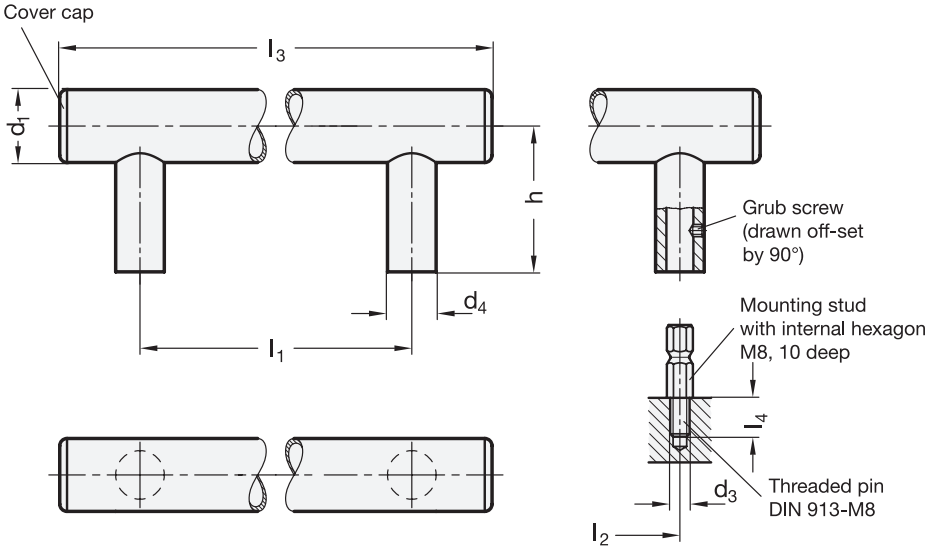
#### EXAMPLE OF APPLICATION

Tubular handles GN 666.7 allow the mounting of a pair of handles in opposite position. This method could be used on doors (double handle).

Generally a modification of the thread length  $l_4$  required for this. The included threaded pin DIN 913-M8x25-A2 of mounting stud needs to be replaced by a longer threaded pin, too.

Handles with modified thread length  $l_4$  are available on request.





GN 666.7

STAINLESS STEEL

Description	d1	d3	l1 ±0.5	l2 ±0.3	d4	h	l3	l4	⚖
GN 666.7-30-M8-200-E	30	M 8	200	200	20	60	265	15	581
GN 666.7-30-M8-250-E	30	M 8	250	250	20	60	315	15	640
GN 666.7-30-M8-300-E	30	M 8	300	300	20	60	365	15	700
GN 666.7-30-M8-400-E	30	M 8	400	400	20	60	465	15	796
GN 666.7-30-M8-500-E	30	M 8	500	500	20	60	565	15	900
GN 666.7-30-M8-600-E	30	M 8	600	600	20	60	665	15	990
GN 666.7-30-M8-200-K	30	M 8	200	200	20	60	265	15	520
GN 666.7-30-M8-250-K	30	M 8	250	250	20	60	315	15	550
GN 666.7-30-M8-300-K	30	M 8	300	300	20	60	365	15	580
GN 666.7-30-M8-400-K	30	M 8	400	400	20	60	465	15	740
GN 666.7-30-M8-500-K	30	M 8	500	500	20	60	565	15	800
GN 666.7-30-M8-600-K	30	M 8	600	600	20	60	665	15	860



U-Handles